

THE

*Freedom*

S E R I E S

2020



# Table of Contents

<b>Model No.</b>	★	<b>Sq. Footage</b>	★	<b>Bedrooms</b>	★	<b>Baths</b>	★	<b>Page</b>
3624-F132	★	756	★	3	★	2	★	4
4024-F133	★	907	★	3	★	2	★	5
4424-9041	★	998	★	3	★	2	★	6
4824-9048	★	1,088	★	3	★	2	★	7
5224-F124	★	1,179	★	3	★	2	★	8
5624-F125	★	1,270	★	3	★	2	★	9
3624-F134	★	972	★	2	★	1	★	10
4428-F115	★	1,188	★	3	★	2	★	11
4828-F136	★	1,224	★	3	★	2	★	12
4828-F112	★	1,296	★	3	★	2	★	13
5228-F111	★	1,404	★	3	★	2	★	14
5228-F113	★	1,404	★	3	★	2	★	15
5228-F117	★	1,404	★	3	★	2	★	16
5228-F123	★	1,332	★	3	★	2	★	17
5628-F110	★	1,512	★	3	★	2	★	18
5628-F116	★	1,512	★	4	★	2	★	19
5628-F131	★	1,512	★	3	★	2	★	20
5628-F135	★	1,440	★	3	★	2	★	21
6028-F114	★	1,620	★	3	★	2	★	22
6028-F119	★	1,620	★	4	★	2	★	23
7228-F118	★	1,944	★	4	★	2	★	24

# SECTIONAL Standards & Features

## INTERIOR

- Full Panel Drapes - Living Areas Only
- Shaw Carpet with 5# Rebond Pad Tack w/Strip
- 8' Flat Ceiling Finish Throughout
- Stipple Ceiling Finish
- Ceiling Close-up Beam at Mate Wall
- Finished Ceiling Joints
- 1/2" Drywall Throughout
- Builder Grade Primer Throughout
- "Closet Maid" Ventilated Wire Shelving in Closets
- Ceiling Lights All Living Areas
- MDF 2" Door & Window Casing & 3" Base Trim
- 2-Panel White Interior Doors
- 32" Interior Doors Where Applicable

## KITCHEN

- 30" Kitchen Cabinets
- LC Wrapped Cabinet Stiles
- Hardwood Cabinet Doors
- Euro Stainless Steel Range Hood
- Concealed European Style Counter-sunk Hinges
- 3/4" Adjustable Shelves in Overhead Cabinets
- Fixed Center Shelf in Base
- GFCI Receptacles
- Metal Drawer Guides
- Brushed Nickel Cabinet Door Knobs
- Stainless Steel Double Bowl Kitchen Sink
- Frigidaire Appliances
- 30" Free-standing Electric Range
- 18 Cu. Ft. Frost Free Refrigerator
- (4) Recessed LED Can Lights in Kitchen
- Recessed LED Can Light over Kitchen Sink
- Laminate Backsplash
- Full Height Ceramic Backsplash to Bottom of Range VBP
- Drawer over Door Cabinet Construction

## BATHS

- 60" Fiberglass Tub/Shower in Master Bath & Bath 2
- High Pressure Laminated Countertops and Backsplash
- Elongated Porcelain Commodes
- Square Porcelain Lavs
- Lighted Power Exhaust Fans
- GFCI Receptacles
- Strip Light Above Vanities
- Large Vanity Mirror-Bath 1
- 36" Tall Vanities in All Baths
- Metal Faucets with Anti-Scald

## INSULATION

- Zone III Insulation Package
  - R-28 Blown Ceiling Insulation with Vapor Barrier
  - R-19 Fiberglass Insulation in Walls
  - R-11 Fiberglass Insulation in Floors
  - Metal Heat Ducts

## EXTERIOR

- Nominal 3/12 Roof Pitch
- 25 Year CertainTeed XT Fiberglass Shingles
- Metal Facia
- Vinyl Vented Soffit
- 36" 6-Panel Front Door w/ Deadbolt
- 36" 6-Panel Rear Door w/ Deadbolt
- Exterior Light at Front and Rear Doors
- .040 Mil CertainTeed Double 4 1/2" Dutch Lap Vinyl Siding
- Exterior GFI Receptacle
- Low E Vinyl Windows w/6 Over Clear Grids
- 15" Shutters (FDS only)

## UTILITIES

- 200 AMP Service Panel 20/40 Box
- Electric Carrier Furnace
- Ecobee 5 WiFi Thermostat
- 40 Gallon Electric Water Heater
- Water Heater Pan with Exterior Drain
- PEX Plumbing

## UTILITIES - continued

- Wire & Plumb for Washer
- Wire & Vent for Dryer
- Recessed Whole House Shut Off
- Water Shut Offs Throughout
- GFI Protected Receptacles in Kitchen and Baths
- TV Jack in Living Room
- Phone Jack in Living Room
- Wireless Doorbell
- Furnace Close-Off Door

## CONSTRUCTION

- Steel I-Beam Frame with Detachable Hitch
- 2"x6" Floor Joists - 16" O.C.
- 23/32 T&G OSB Floor Decking Glued & Fastened
- 2"x 6" Exterior Walls - 16" O.C.
- 20 lb. Roof Load
- Roof Trusses 24" on Center
- Ridge Vent Roof Venting
- Linked Smoke Detectors with Battery Back-up in Main Living & All Bedrooms
- 7/16" OSB Exterior Sheathing with Windwrap
- Additional Floor Joists to Eliminate Piers

## MODULAR SPECIFICATIONS ADDITIONS

- Nominal 3/12 Roof Truss
- 2"x 10" Floor Joists 16" O.C.
- R-40 Insulation in Ceiling
- Additional Exterior Recept (2 Total)
- 30# Ground Snow Load
- Fiberglass Heat Ducts
- 2"x4" Interior Walls
- 2"x 4" Mate Line Wall
- 40/40 200 amp Panel Box
- Metal Cross Bridging
- Argon Gas Windows

MODEL  
NUMBER

# 3624-F132 ★ 756 sq. ft. 3 Bedroom / 2 Bath

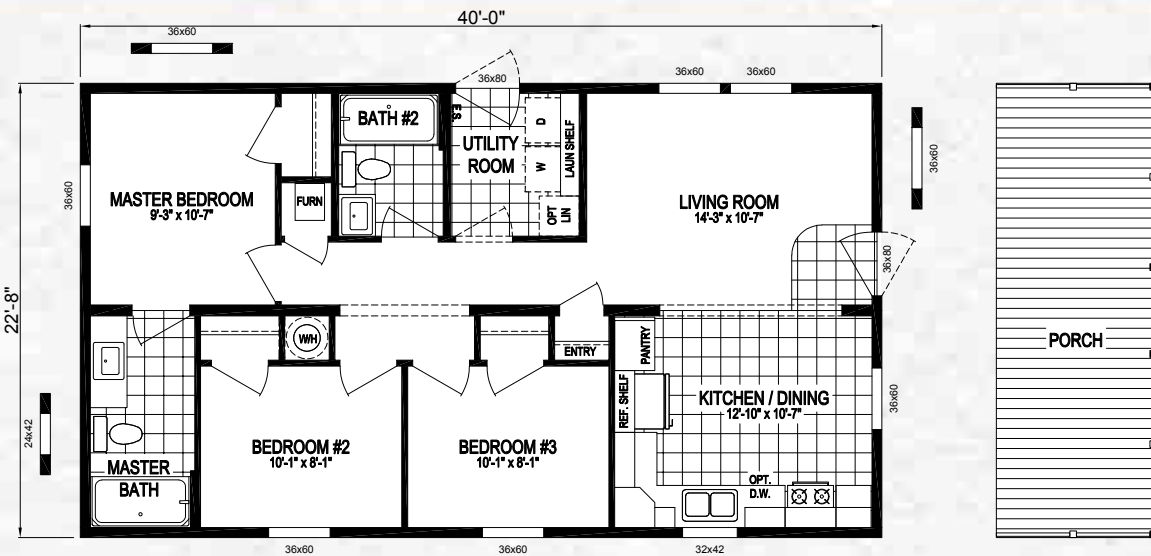


**NOTE:**

- MARRIAGE LINE CLOSE UP BEAM NOT AVAILABLE ON THIS MODEL
- EURO RANGE HOOD NOT AVAILABLE ON THIS MODEL
- NOT AVAILABLE AS A MODULAR UNIT

907 sq. ft. 3 Bedroom / 2 Bath ★ **4024-F133**

MODEL NUMBER



8' PORCH OPTION

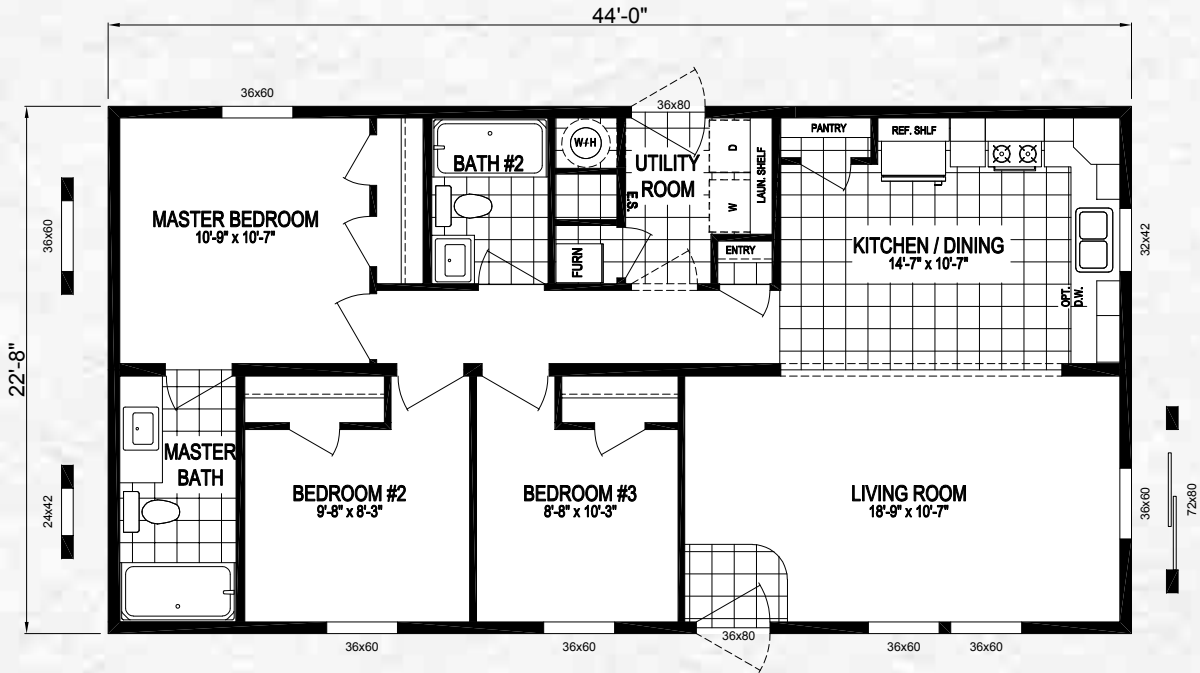
**NOTE:**

- EURO RANGE HOOD NOT AVAILABLE ON THIS MODEL
- NOT AVAILABLE AS A MODULAR UNIT

MODEL  
NUMBER

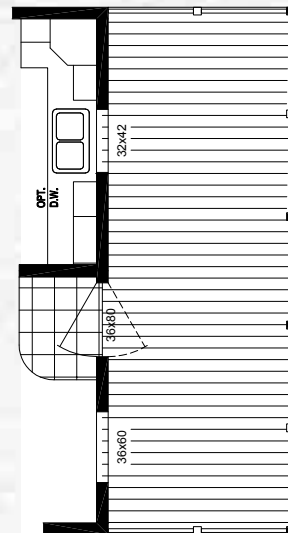
**4424-9041**

★ 998 sq. ft. 3 Bedroom / 2 Bath



**NOTES:**

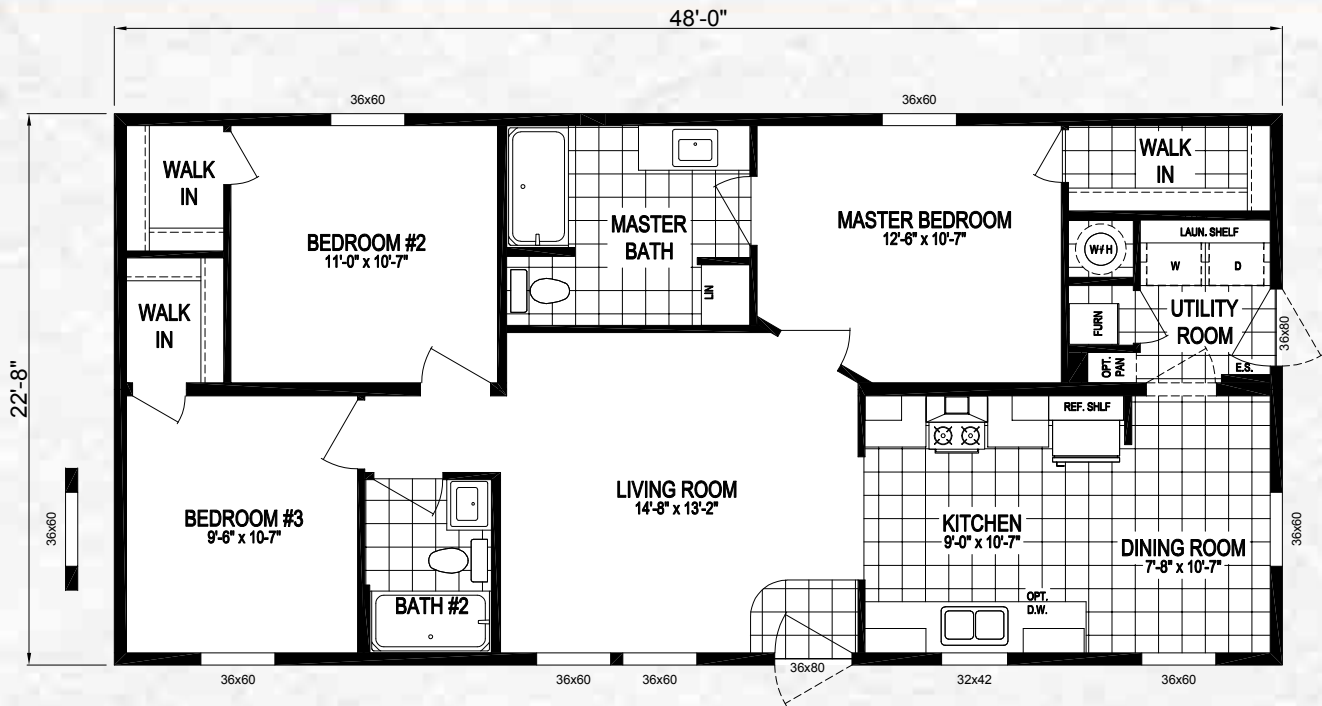
- NOT AVAILABLE AS A MODULAR UNIT
- GLASS TOP RANGE HOOD NOT AVAILABLE



**OPTIONAL 8' PORCH  
(SHOWN w/ END ENTRY OPTION)**

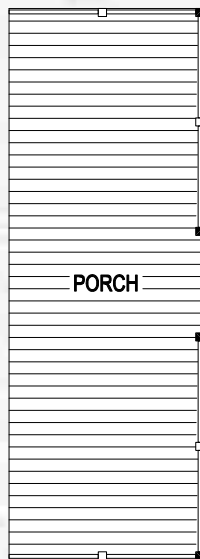
1,088 sq. ft. 3 Bedroom / 2 Bath ★ **4824-9048**

MODEL NUMBER



**NOTES:**

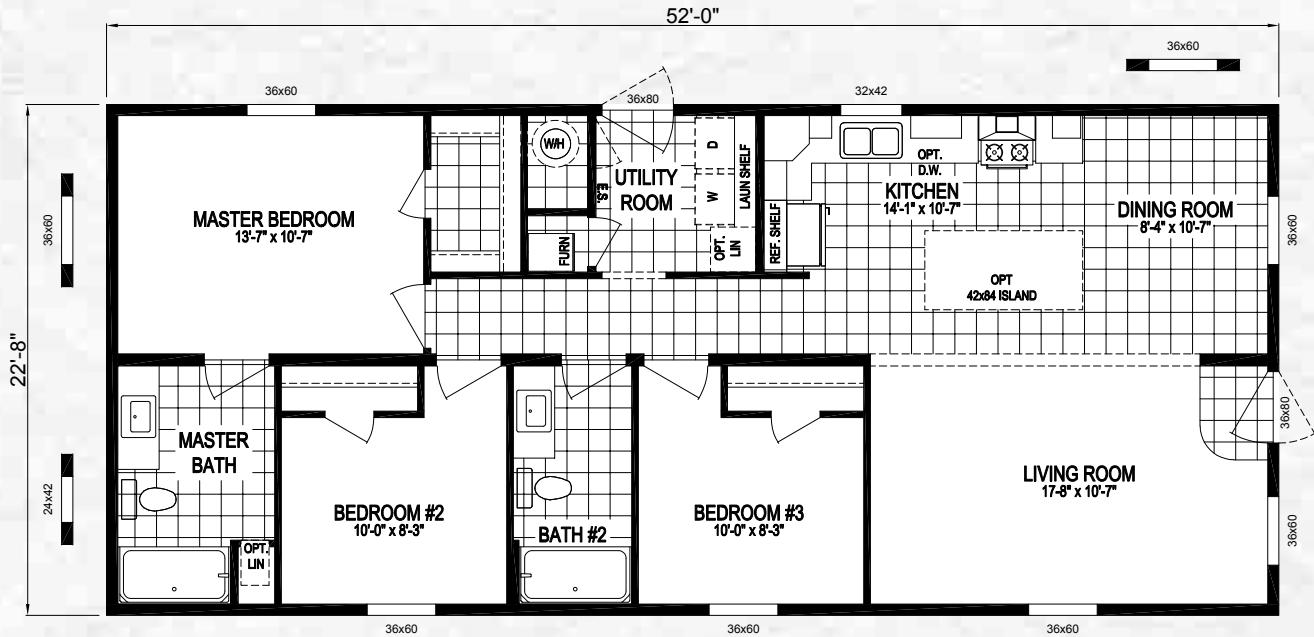
- NOT AVAILABLE AS A MODULAR UNIT



8' PORCH OPTION

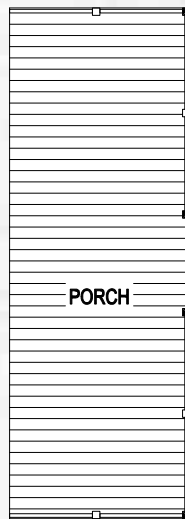
MODEL  
NUMBER

# 5224-F124 ★ 1,179 sq. ft. 3 Bedroom / 2 Bath

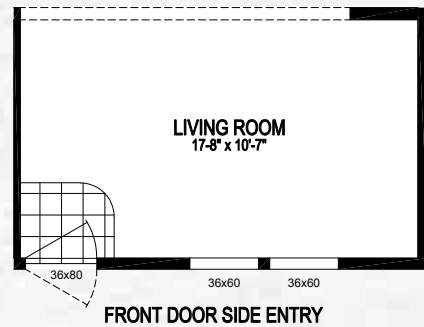


**NOTES:**

- NOT AVAILABLE AS A MODULAR UNIT



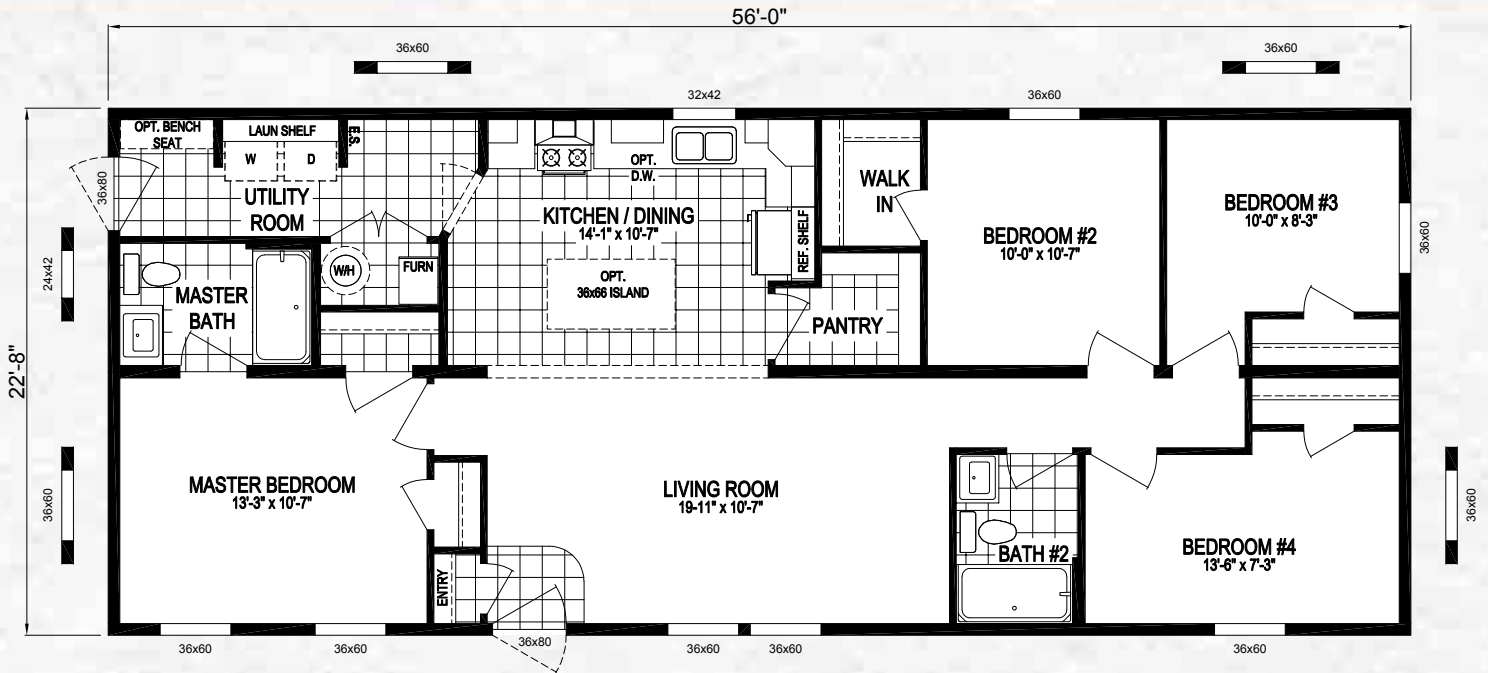
8' PORCH OPTION



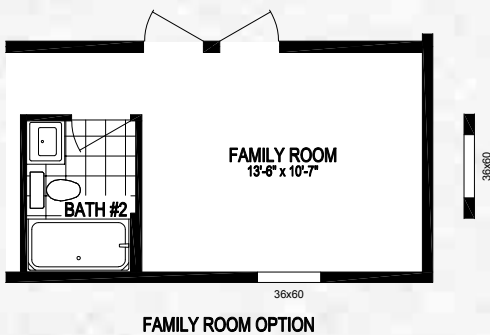


1,270 sq. ft. 3 Bedroom / 2 Bath ★ **5624-F125**

MODEL NUMBER



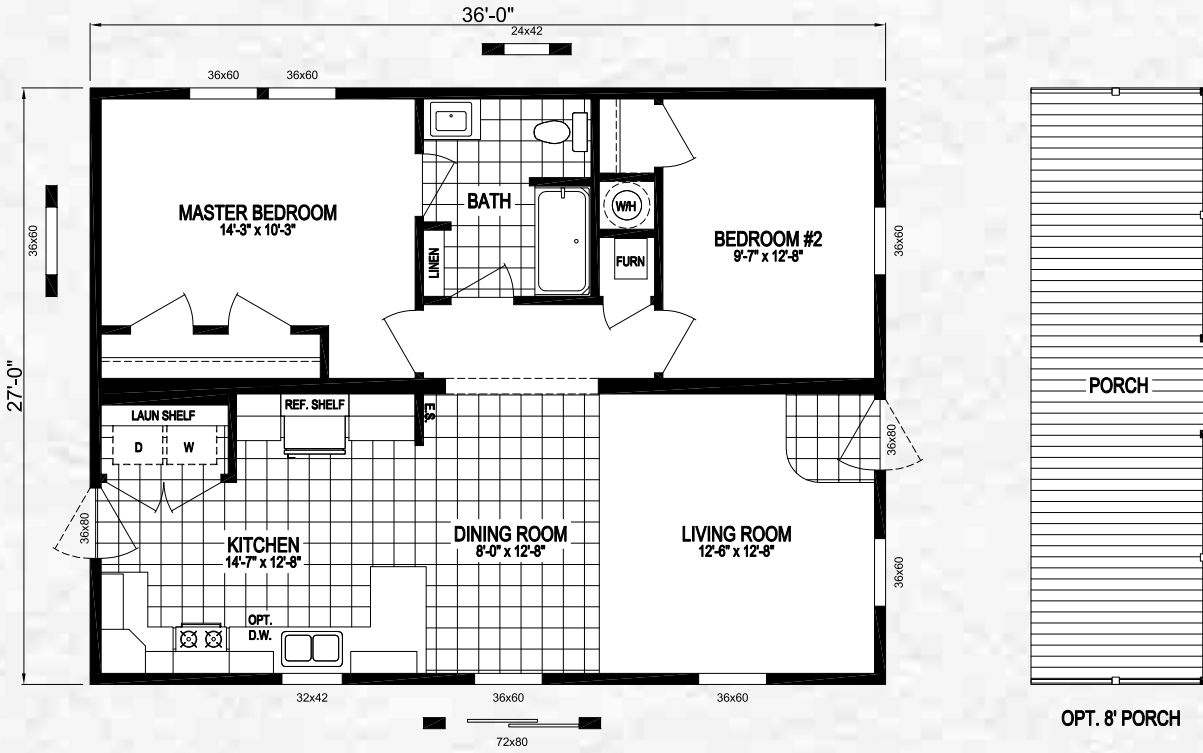
NOTES:  
 • NOT AVAILABLE AS A MODULAR UNIT



NOTES:  
 • PATIO DOOR IS FORCED OPTION W/ 8' PORCH

MODEL  
NUMBER

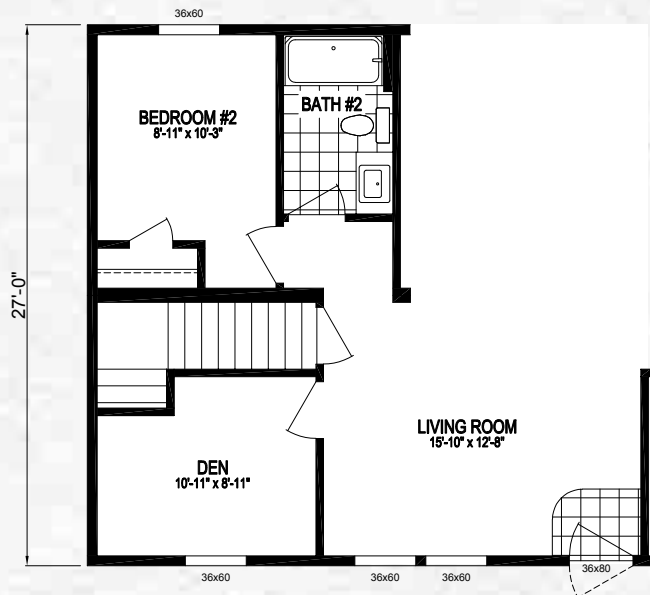
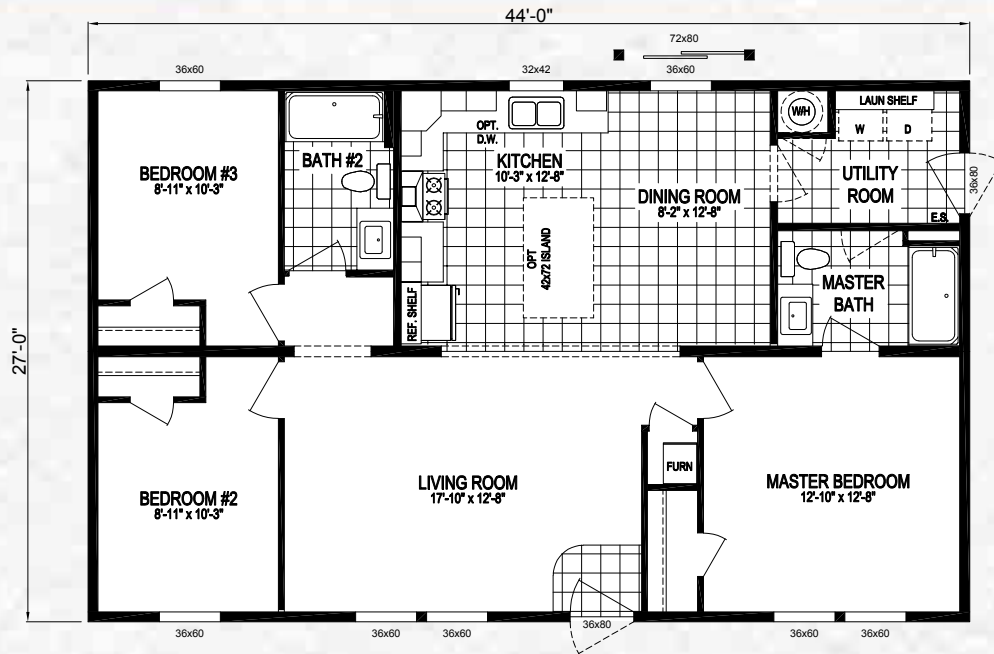
# 3628-F134 ★ 972 sq. ft. 2 Bedroom / 1 Bath



- NOTE:**
- EURO RANGE HOOD NOT AVAILABLE ON THIS MODEL
- NOTE:**
- BASEMENT OPTION NOT AVAILABLE ON MOD

1,188 sq. ft. 3 Bedroom / 2 Bath ★ **4428-F115**

MODEL NUMBER

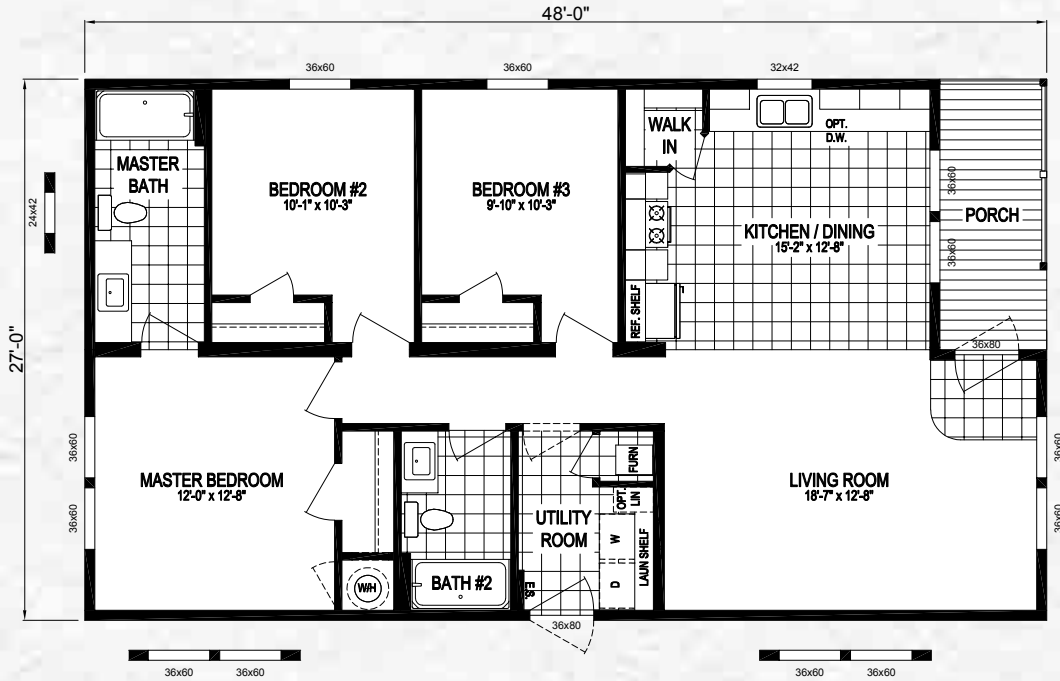


OPTIONAL BASEMENT STAIRWELL  
(NOT AVAILABLE WITH EXT. PACKAGE)

MODEL  
NUMBER

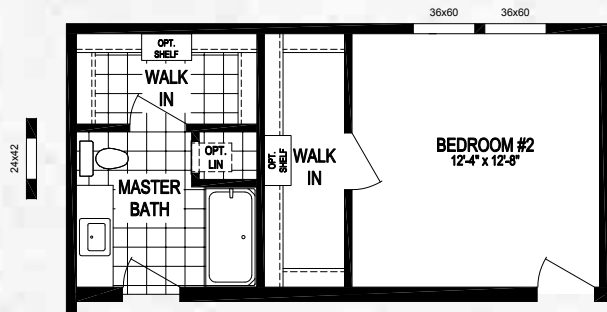
**4828-F136**

★ 1,224 sq. ft. 3 Bedroom / 2 Bath



**NOTE:**

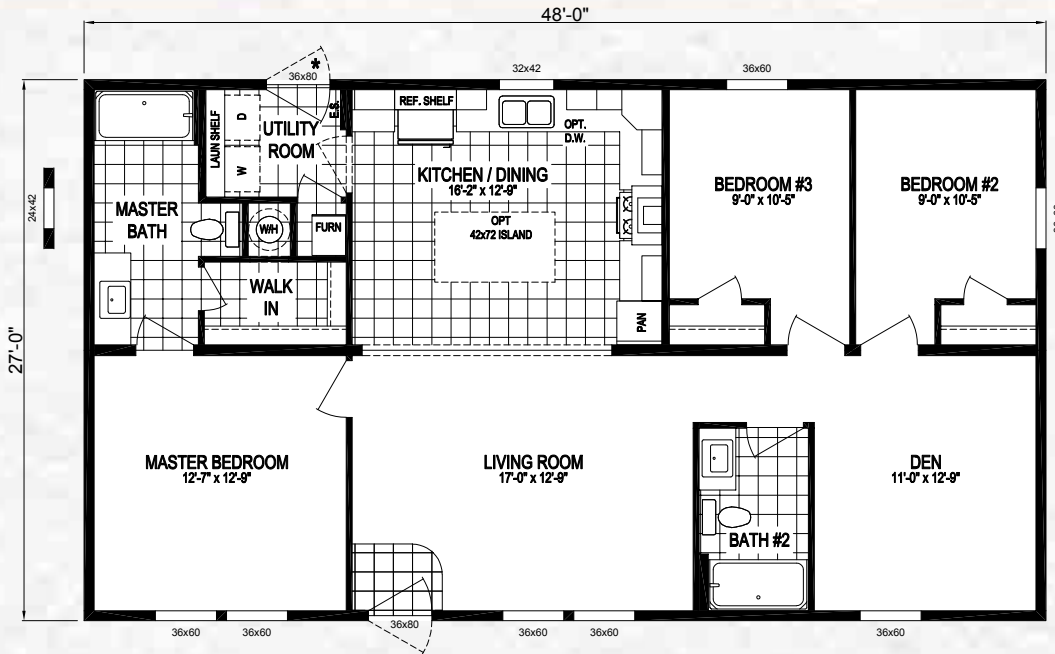
- MARRIAGE LINE CLOSE UP BEAM NOT AVAILABLE ON THIS MODEL
- EURO RANGE HOOD NOT AVAILABLE ON THIS MODEL
- BASEMENT OPTION NOT AVAILABLE ON A MOD



**TWO BEDROOM OPTION**

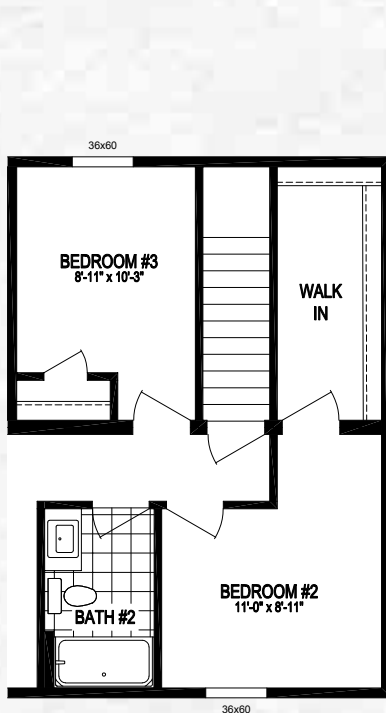
1,296 sq. ft. 3 Bedroom / 2 Bath ★ **4828-F112**

MODEL NUMBER

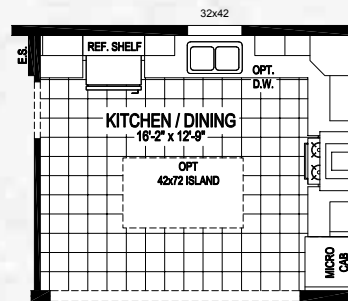


NOTE:  
HUD HOMES THAT HAVE A GAS WATER HEATER AND A 5/12 ROOF PITCH WILL REQUIRE AN "SC" ON SITE INSPECTION

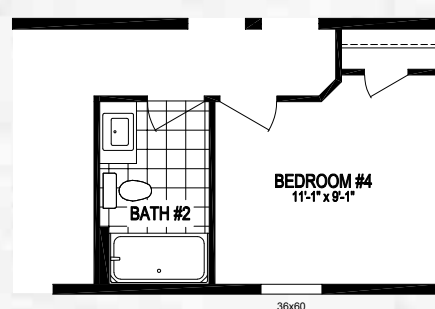
NOTE:  
DOORS MARKED WITH A "\*" CANNOT HAVE THE HUD PIER SAVER SYSTEM AND WILL NEED PERIMETER BLOCKS OR ADJUSTABLE OUTRIGGERS (ON SITE IF LOCAL CODE ALLOWS)



STAIRWELL OPTION  
(MOD ONLY)



MICROWAVE CAB. OPTION



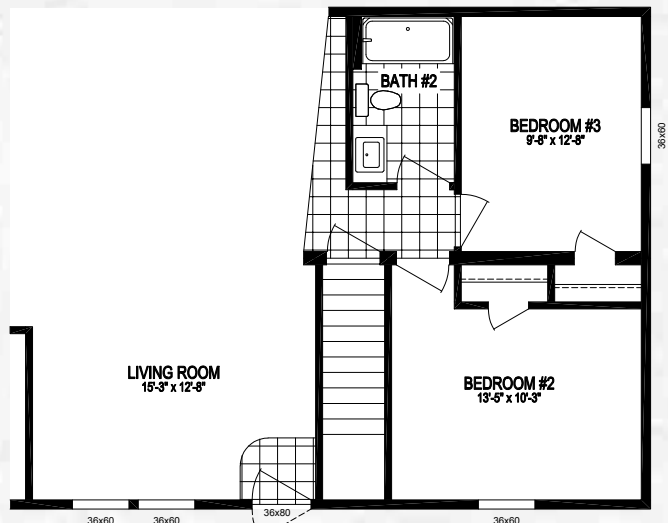
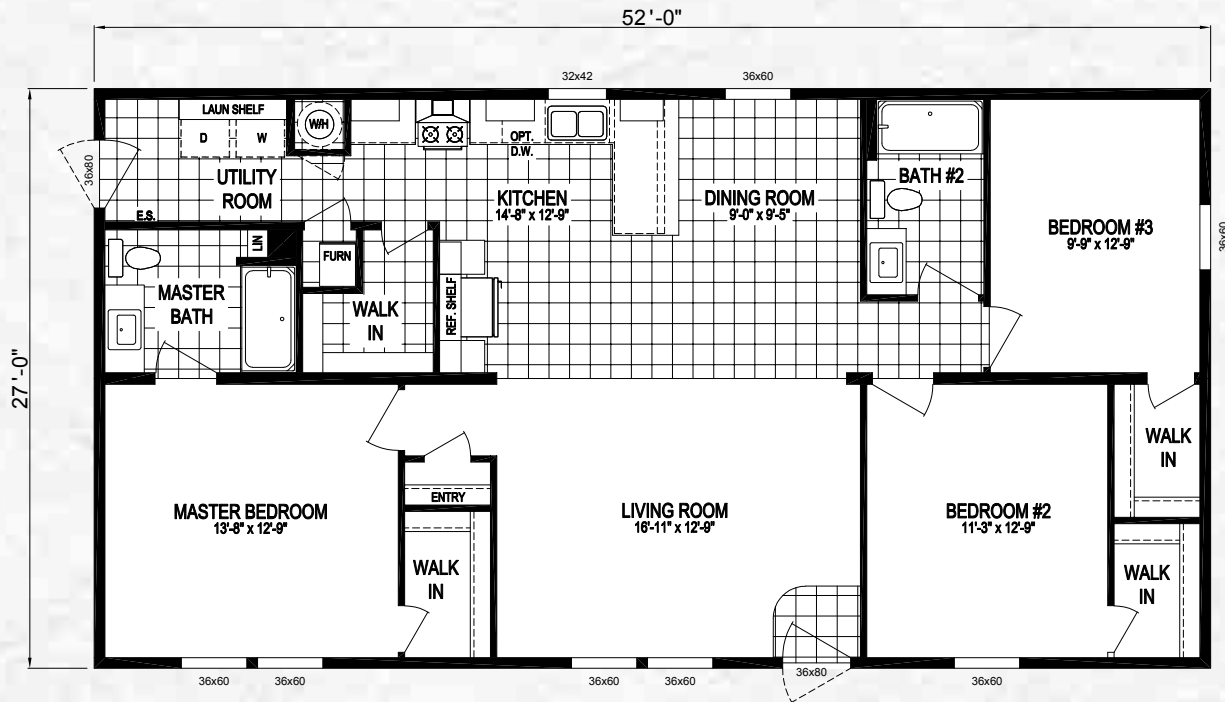
4th BEDROOM OPTION

\* NOT AVAILABLE WITH STAIRWELL OPTION

MODEL  
NUMBER

**5228-F111**

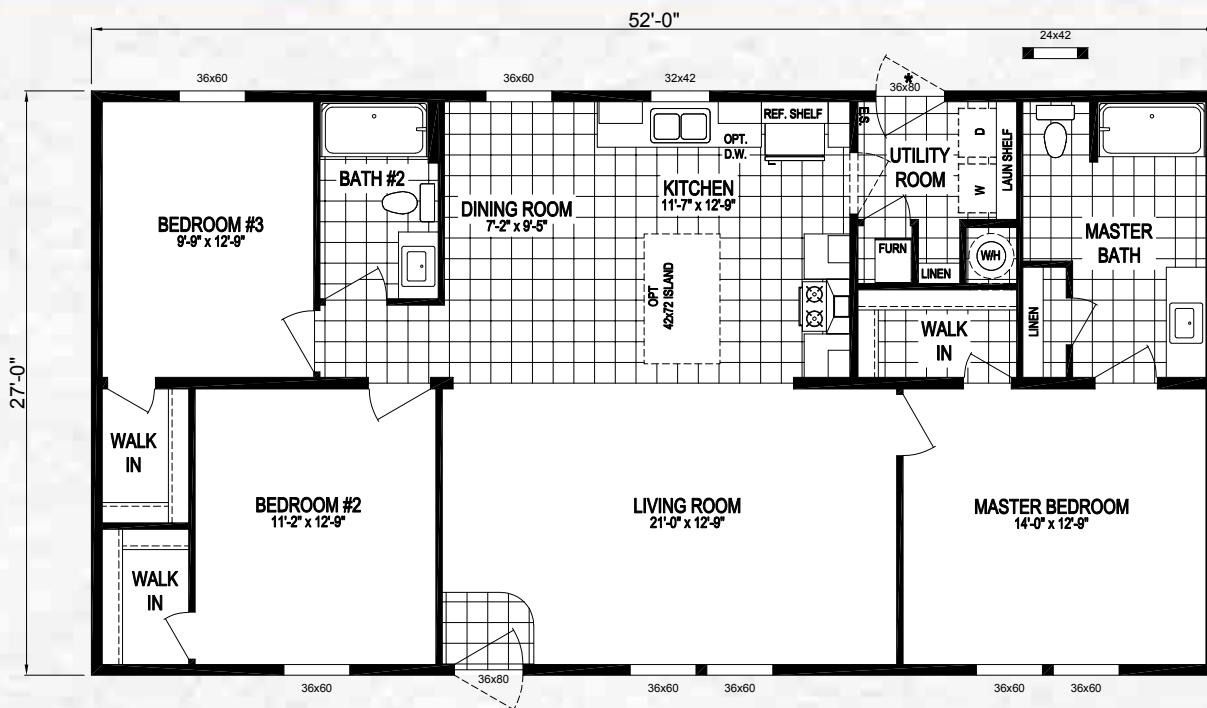
★ 1,404 sq. ft. 3 Bedroom / 2 Bath



STAIRWELL OPTION  
(MOD ONLY)

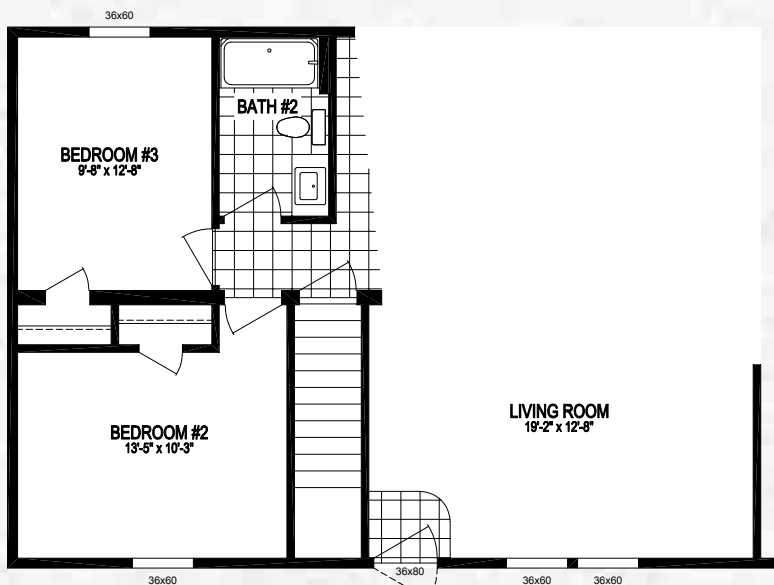
1,404 sq. ft. 3 Bedroom / 2 Bath ★ 5228-F113

MODEL NUMBER

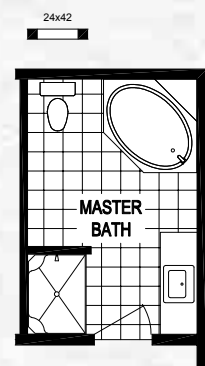


**NOTE:**  
HUD HOMES THAT HAVE A GAS WATER HEATER AND A 5/12 ROOF PITCH WILL REQUIRE AN "SC" ON SITE INSPECTION

**NOTE:**  
DOORS MARKED WITH A "\*" CANNOT HAVE THE HUD PIER SAVER SYSTEM AND WILL NEED PERIMETER BLOCKS OR ADJUSTABLE OUTRIGGERS (ON SITE IF LOCAL CODE ALLOWS)



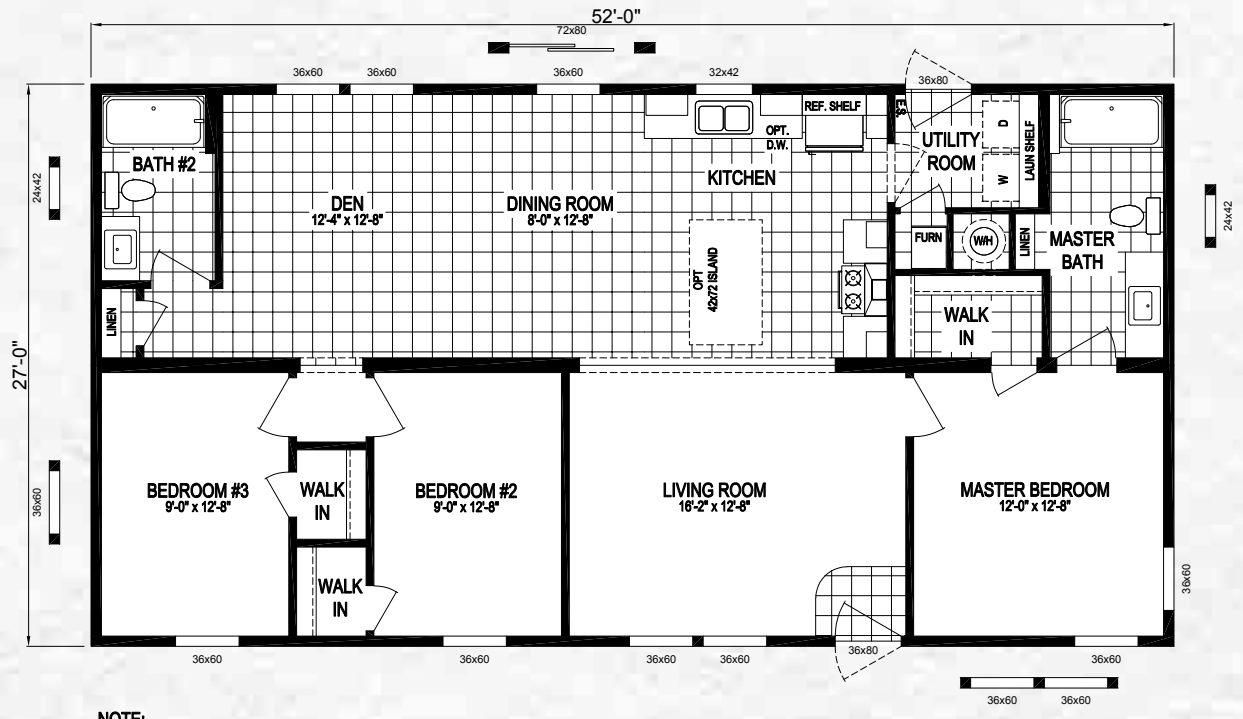
STAIRWELL OPTION (MOD ONLY)



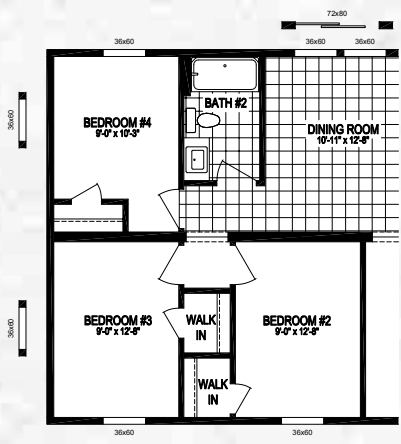
DELUXE BATH OPTION

MODEL NUMBER

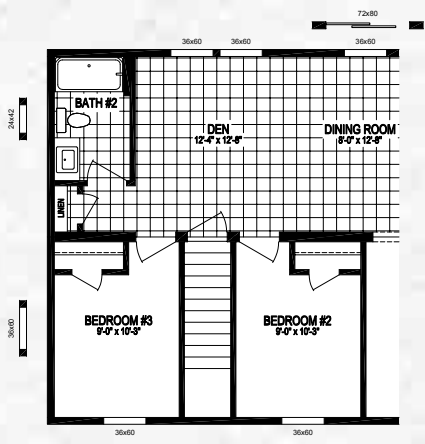
# 5228-F117 ★ 1,404 sq. ft. 3 Bedroom / 2 Bath



NOTE:  
HUD HOMES THAT HAVE A GAS WATER HEATER AND A 5/12  
ROOF PITCH WILL REQUIRE AN "SC" ON SITE INSPECTION



4 BEDROOM OPTION

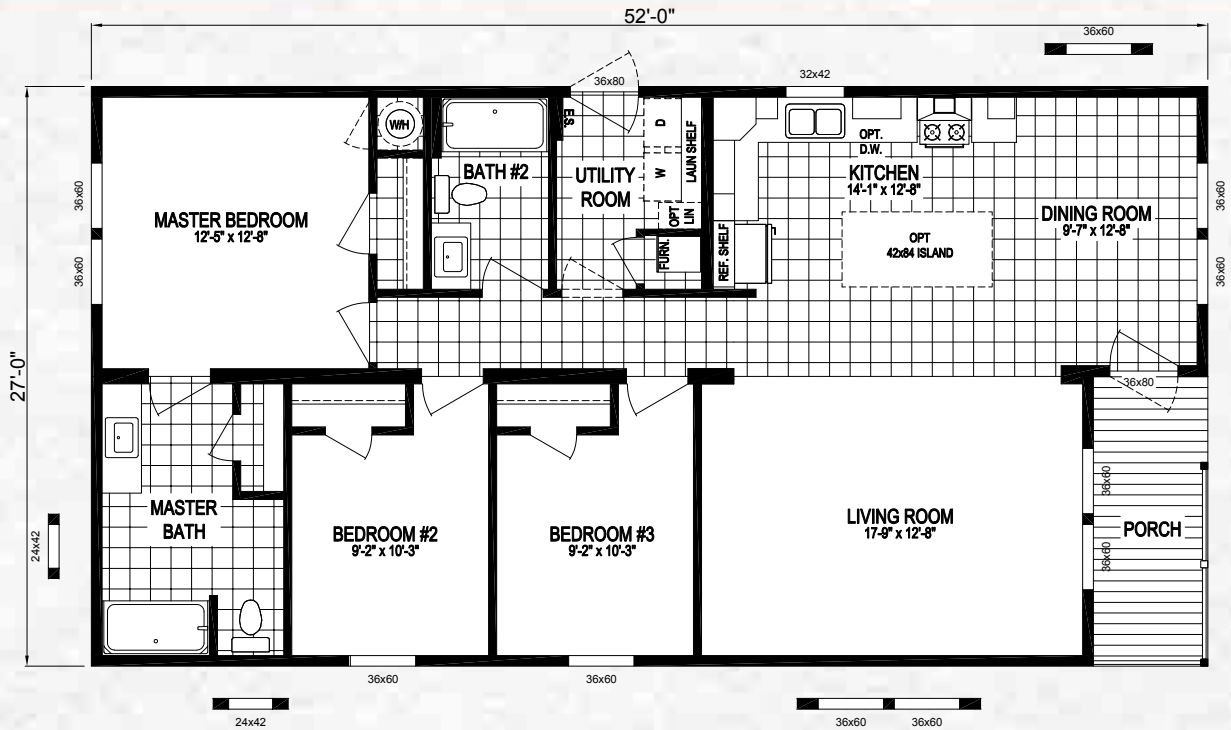


STAIRWELL OPTION  
(MOD ONLY)



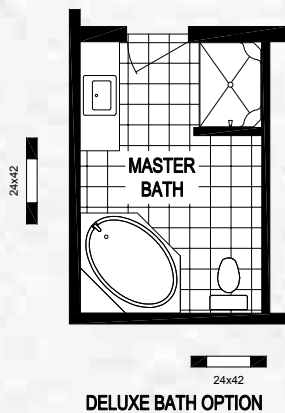
1,332 sq. ft. 3 Bedroom / 2 Bath ★ **5228-F123**

MODEL NUMBER



**NOTE:**

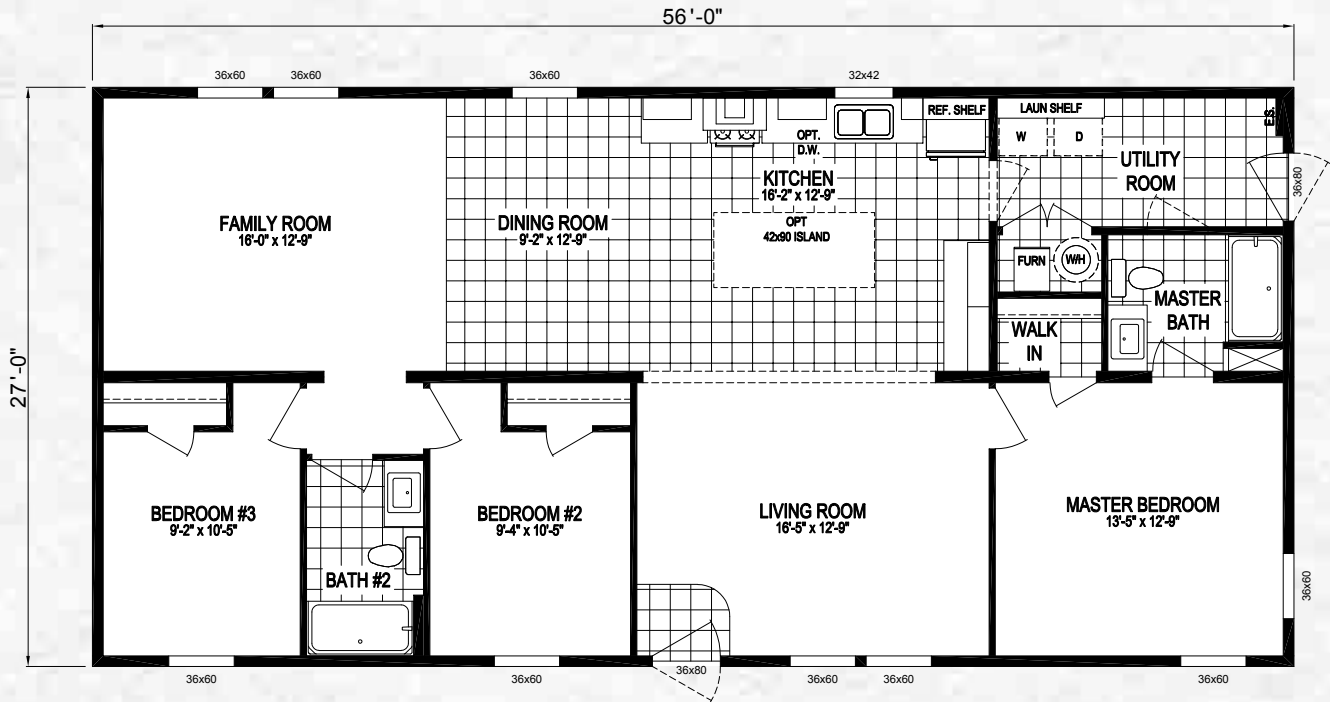
- MARRIAGE LINE CLOSET UP BEAM NOT AVAILABLE ON THIS MODEL
- BASEMENT OPTION NOT AVAILABLE ON A MOD



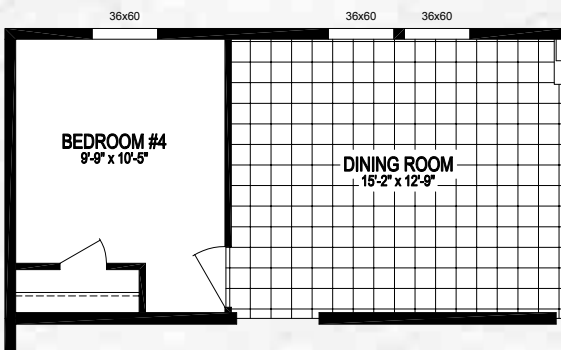
MODEL NUMBER

# 5628-F110

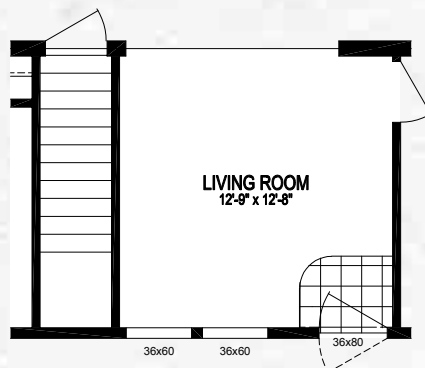
★ 1,512 sq. ft. 3 Bedroom / 2 Bath



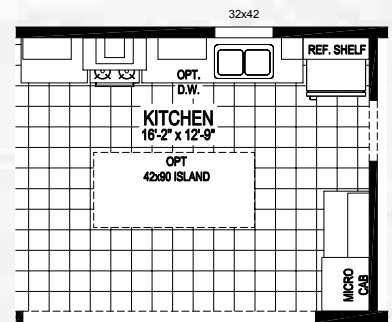
NOTE:  
HUD HOMES THAT HAVE A GAS WATER HEATER AND A 5/12  
ROOF PITCH WILL REQUIRE AN "SC" ON SITE INSPECTION



4th BEDROOM OPTION



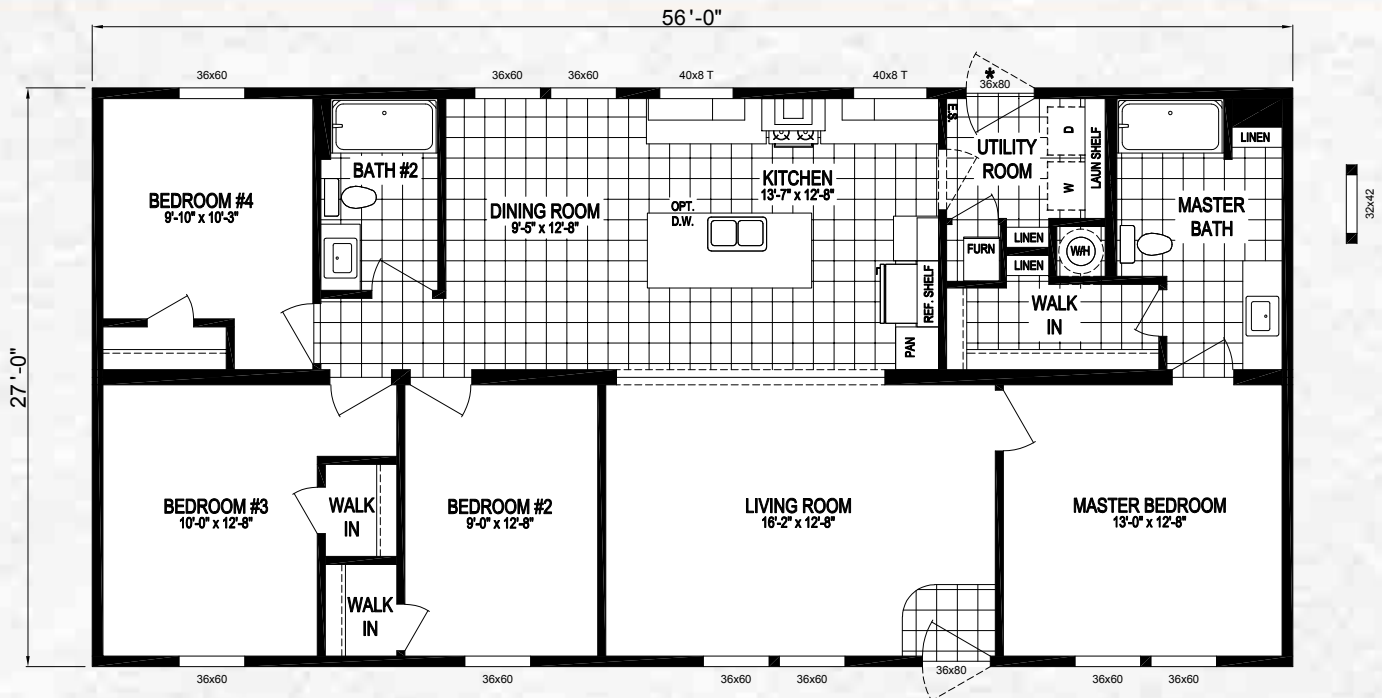
STAIRWELL OPTION  
(MOD ONLY)



MICROWAVE CAB. OPTION

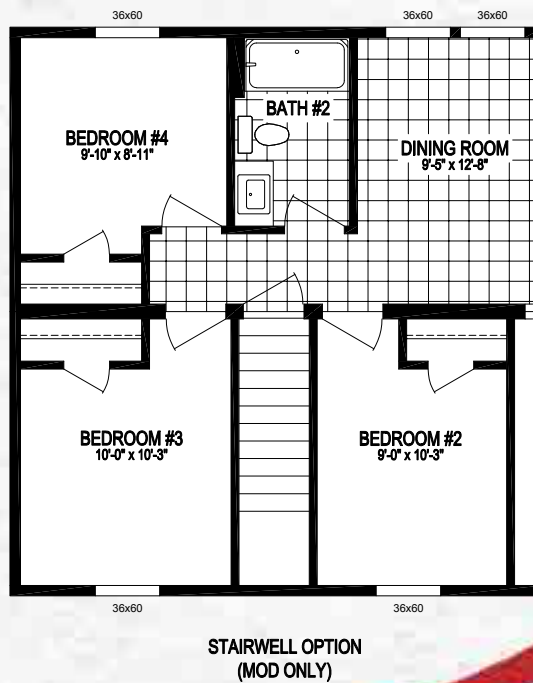
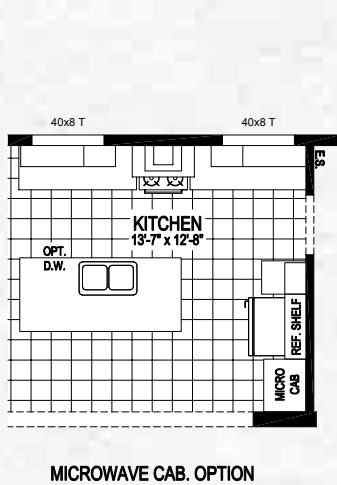
1,512 sq. ft. 3 Bedroom / 2 Bath ★ **5628-F116**

MODEL NUMBER



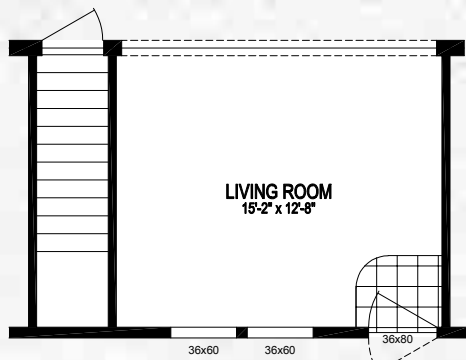
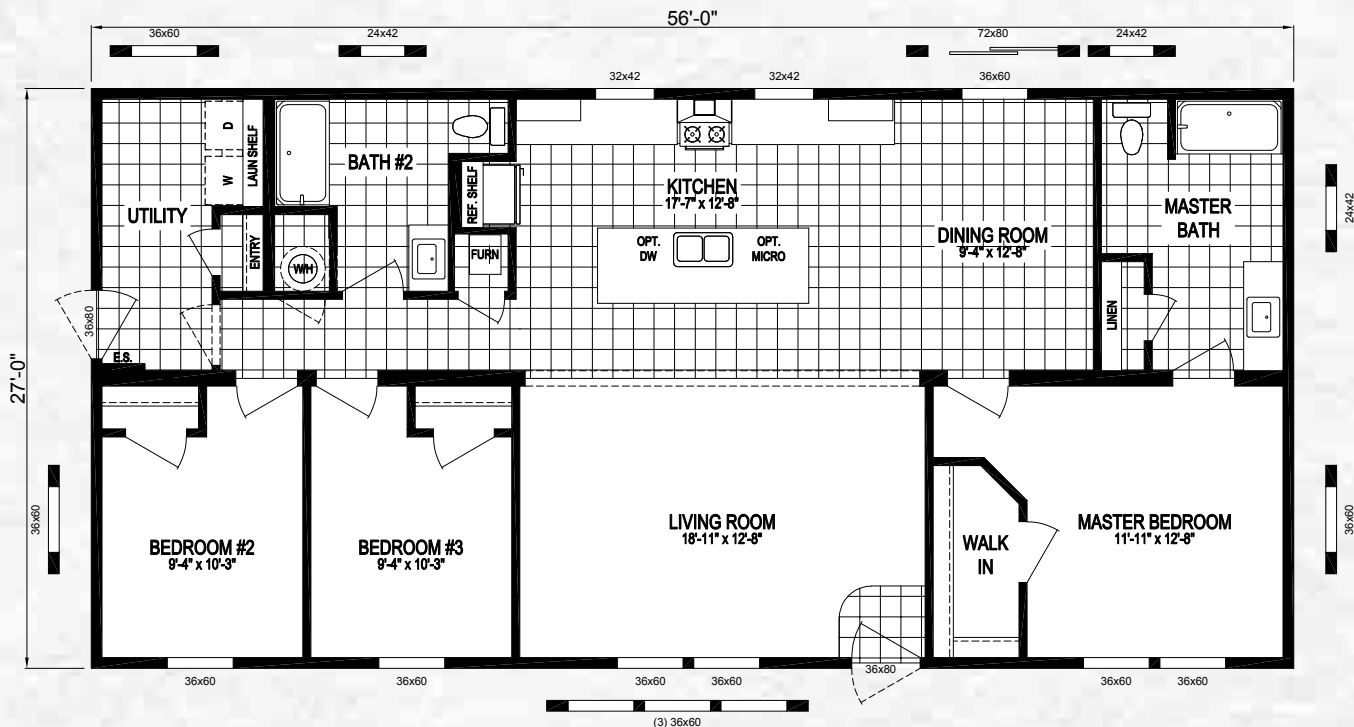
**NOTE:**  
HUD HOMES THAT HAVE A GAS WATER HEATER AND A 5/12 ROOF PITCH WILL REQUIRE AN "SC" ON SITE INSPECTION

**NOTE:**  
DOORS MARKED WITH A \* CANNOT HAVE THE HUD PIER SAVER SYSTEM AND WILL NEED PERIMETER BLOCKS OR ADJUSTABLE OUTRIGGERS (ON SITE IF LOCAL CODE ALLOWS)

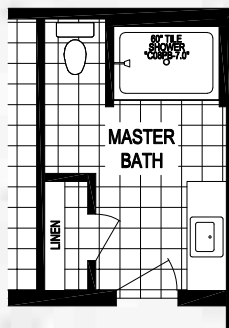


MODEL NUMBER

# 5628-F131 ★ 1,512 sq. ft. 3 Bedroom / 2 Bath



STAIRWELL OPTION  
(MOD ONLY)



60" DURAWALL SHOWER OPTION



DELUXE BATH OPTION

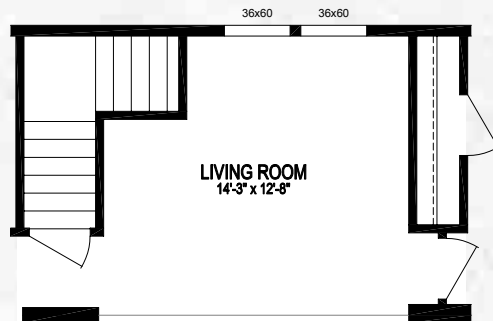
1,512 sq. ft. 3 Bedroom / 2 Bath ★ **5628-F135**

MODEL NUMBER



**NOTE:**

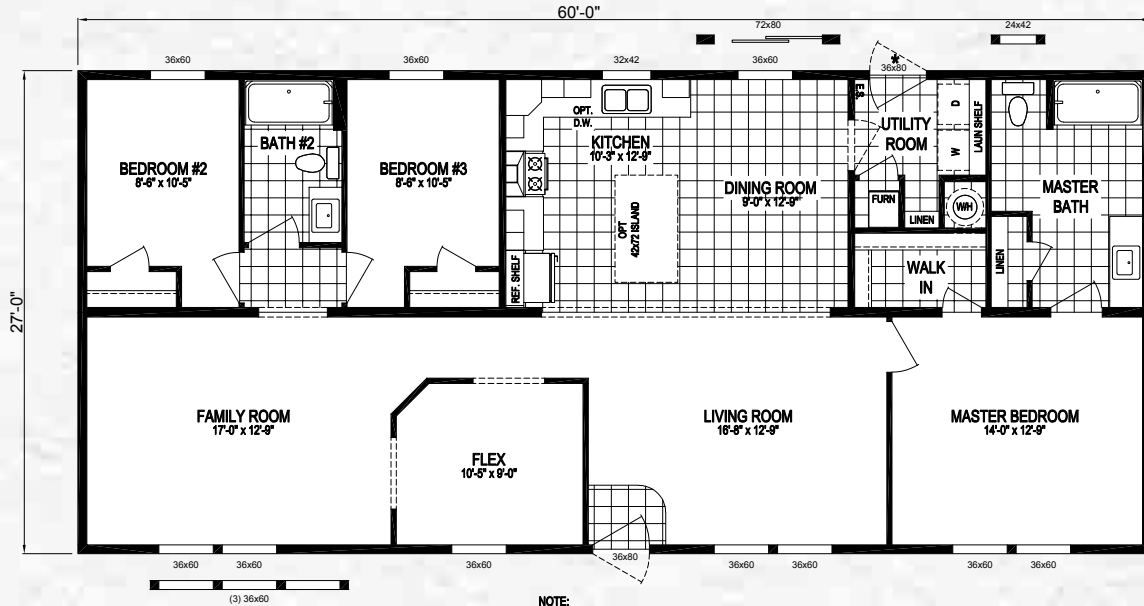
- MARRIAGE LINE CLOSE UP BEAM NOT AVAILABLE ON THIS MODEL



STAIRWELL OPTION  
(MOD ONLY)

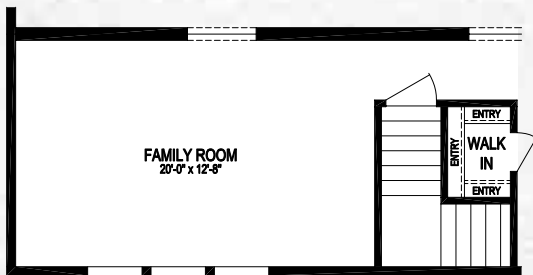
MODEL NUMBER

# 6028-F114 ★ 1,620 sq. ft. 4 Bedroom / 2 Bath

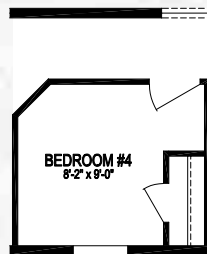


**NOTE:**  
HUD HOMES THAT HAVE A GAS WATER HEATER AND A 5/12 ROOF PITCH WILL REQUIRE AN "SC" ON SITE INSPECTION

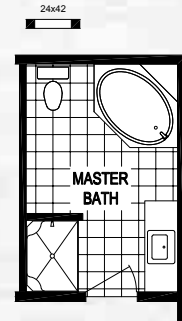
**NOTE:**  
DOORS MARKED WITH A \* \* \* CANNOT HAVE THE HUD PIER SAVER SYSTEM AND WILL NEED PERIMETER BLOCKS OR ADJUSTABLE OUTRIGGERS (ON SITE IF LOCAL CODE ALLOWS)



STAIRWELL OPTION (MOD ONLY)



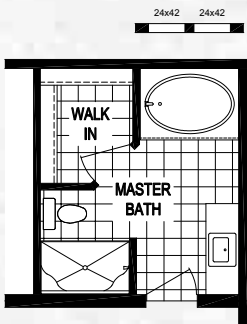
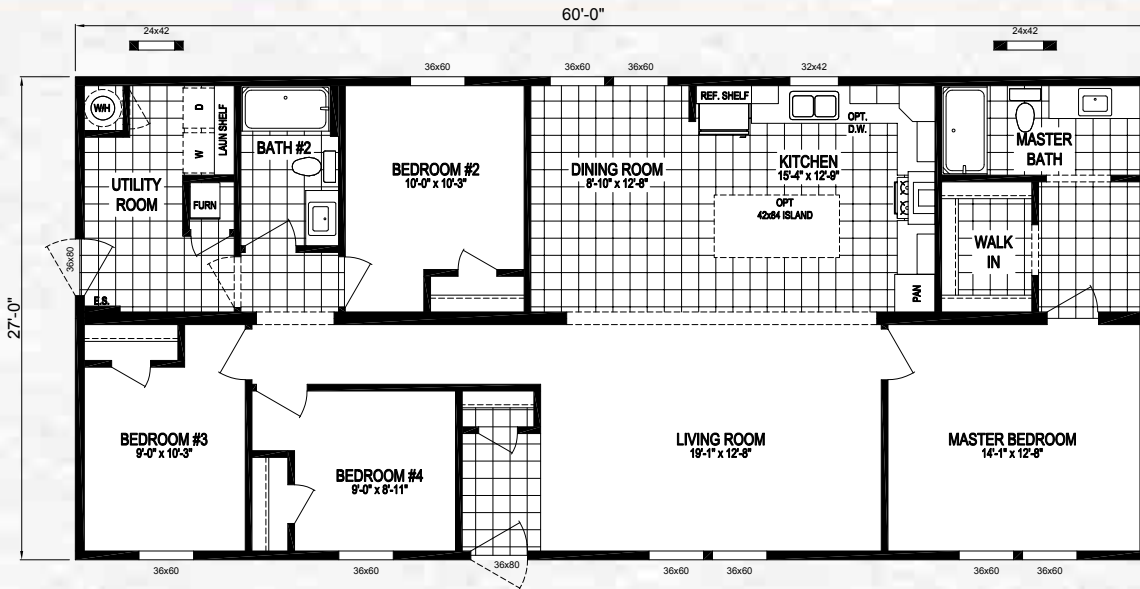
4th BEDROOM OPTION (STAIRWELL OPTION NOT AVAILABLE WITH 4TH BEDROOM OPTION)



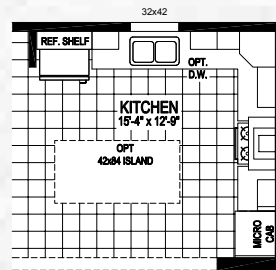
DELUXE BATH OPTION

1,620 sq. ft. 4 Bedroom / 2 Bath ★ **6028-F119**

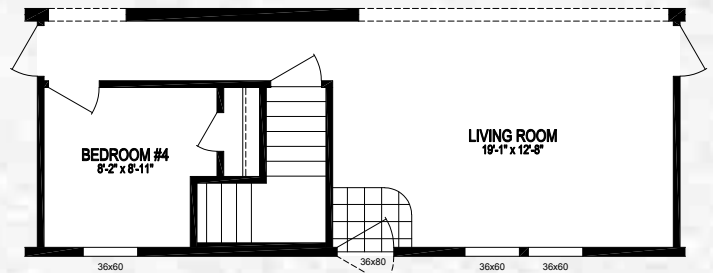
MODEL NUMBER



DELUXE BATH OPTION



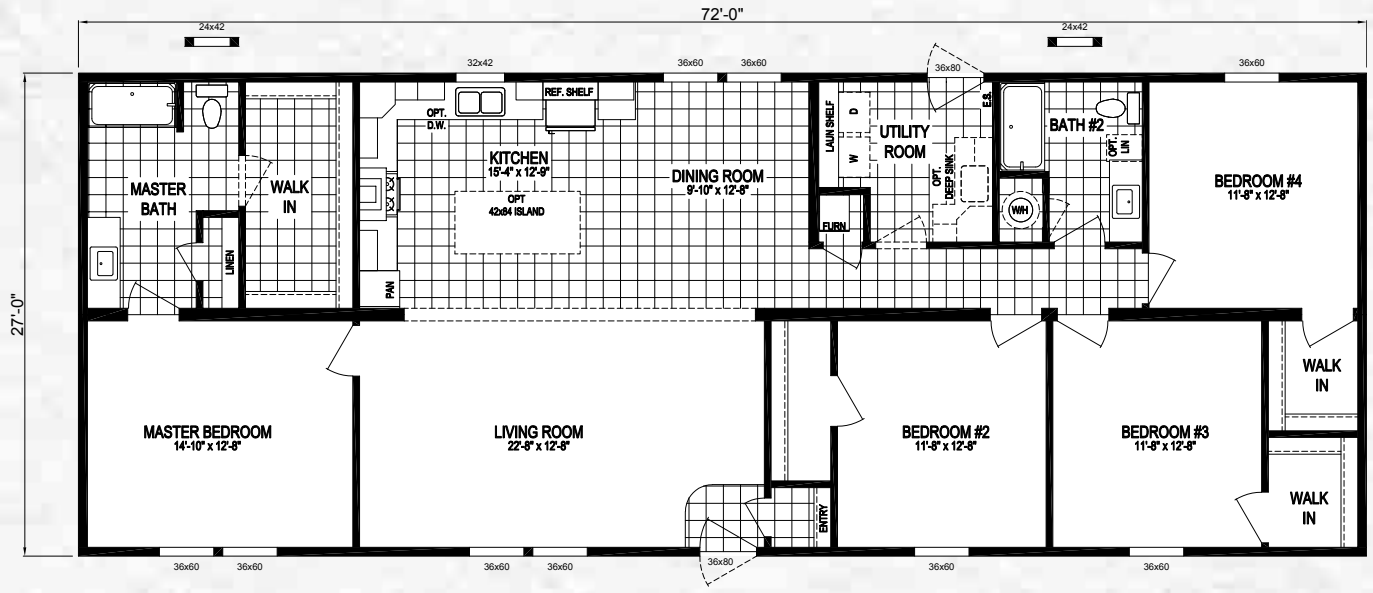
MICROWAVE CAB. OPTION



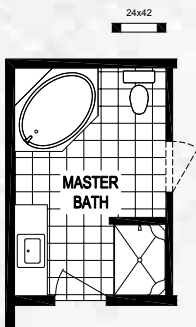
STAIRWELL OPTION  
(MOD ONLY)

MODEL NUMBER

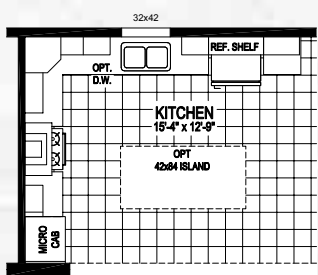
# 7228-F118 ★ 1,944 sq. ft. 4 Bedroom / 2 Bath



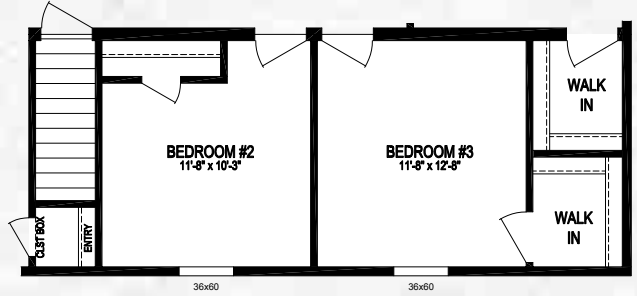
NOTE:  
HUD HOMES THAT HAVE A GAS WATER HEATER AND A 5/12  
ROOF PITCH WILL REQUIRE AN "SC" ON SITE INSPECTION



DELUXE BATH OPTION



MICROWAVE CAB. OPTION



STAIRWELL OPTION  
(MOD ONLY)





# EXTERIOR PACKAGES



**20' Open Dormer w/Columns,  
Vertical Board & Batten Siding  
& Window Surrounds**  
3/12 Pitch Only



**Deluxe End Elevation  
w/Eyebrow, Column, Shake  
& Window Surrounds**  
Shown with Shutters



**20' Hinged Dormer  
w/Continuous Eave**  
5/12 Pitch Only



**20' Open Dormer**  
3/12 Pitch Only



# NOTES

A large, faint, light-gray five-pointed star is centered on the page. The star is semi-transparent, allowing the horizontal lines of the notes section to be seen through it. The star's points extend towards the top and bottom edges of the page.



# NOTES

---

---

---

---

---

---

---

---

---

---

---

---

---

---

---

---

---

---

---

---

---

---

---

---

THE  
*Freedom*  
S E R I E S

  
**Clayton**  
middlebury

437 N. Main Street  
Middlebury, IN 46540  
Phone: 574.825.7500  
Fax: 574.825.7569  
[www.claytonmiddlebury.com](http://www.claytonmiddlebury.com)

**YOUR LOCAL HOME BUILDER**

Because our company has a continuous product update process, specifications, floor plan lay-out and dimensions shown on this literature are subject to change without notice or obligations. Construction and design specifications as well as features presented conceptual, therefore should not be used as actual construction data and may not be offered in all series or models. Our Retailer will provide accurate, up-to-date information on available options and specifications for your home.